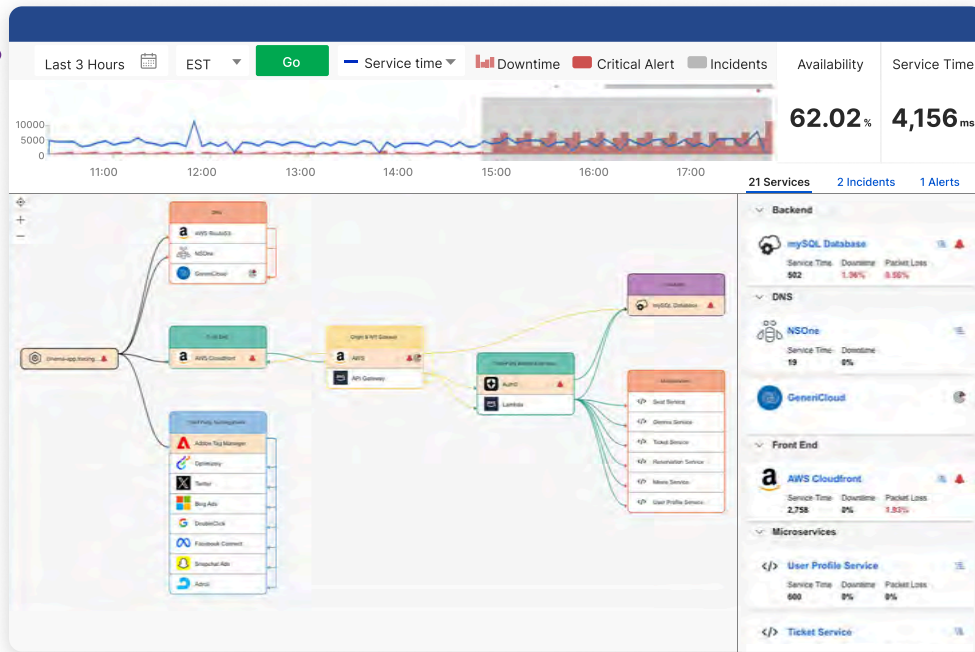


Learn more about Catchpoint Internet Performance Monitoring (IPM) at <https://www.catchpoint.com/>

# Internet Stack Map™

Instant awareness of critical service or application issues



Visually understand the Internet dependencies impacting service or application performance at a glance with Catchpoint's Internet Stack Map. By viewing every system and service your application depends upon in a simple, interactive, real-time and

automatically-generated status map, you can instantly diagnose issues and slash both MTI and MTTR. Only Catchpoint's IPM can provide detailed, automatic, and interactive service/application-specific maps that simplify troubleshooting and show you what APM can't.

## Internet Stack Map provides:



**A live performance display** of the entire [Internet Stack](#) for a specific service or application.



**An interactive view** of all dependent services and applications and how they interrelate.



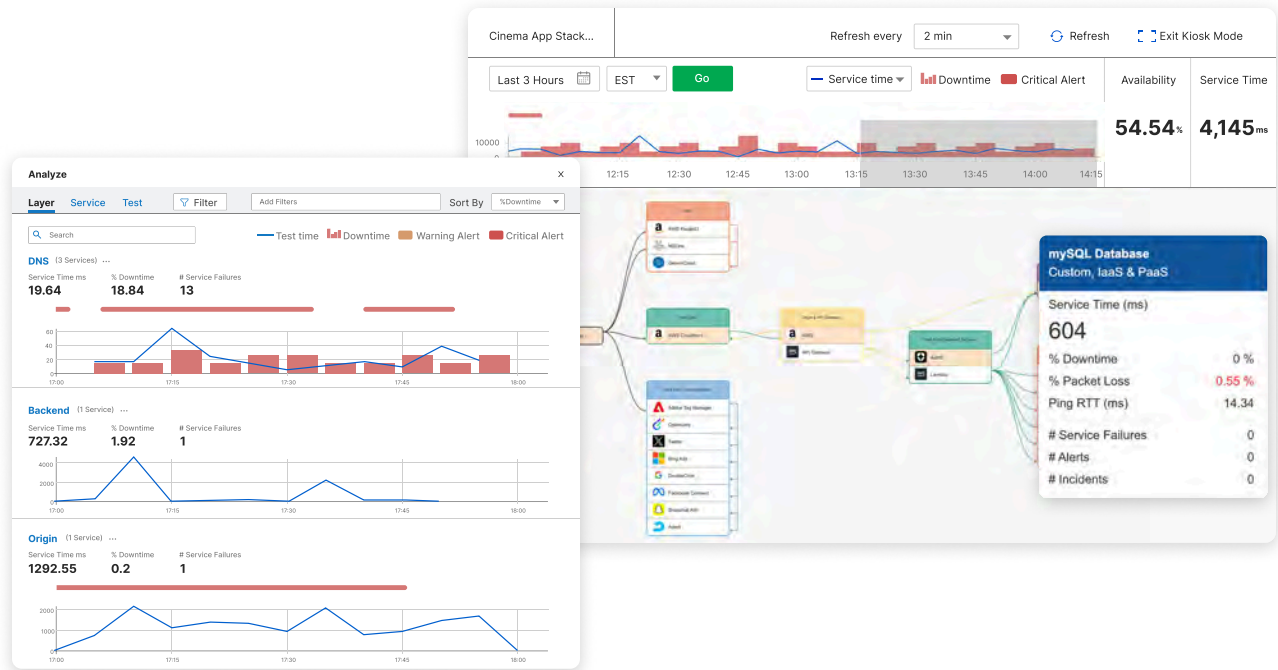
**Current & historical information** on performance issues over time.

## A live view of your digital service and it's health in the Internet Stack

Every organization is running critical applications and services that rely upon Internet-based third-party systems. This makes diagnosing issues a challenge when the problem is outside the visibility of APM systems (and 90% of issues are). When you're losing thousands of dollars per minute of downtime these

challenges get expensive – and remember that 'slow' is the new 'down.' Internet Stack Map shows you exactly what's impacting your application, making troubleshooting fast and effective, eliminating finger-pointing and war rooms, while drastically reducing MTTI and MTTR.

## The answer to the question “What’s wrong with my application?”



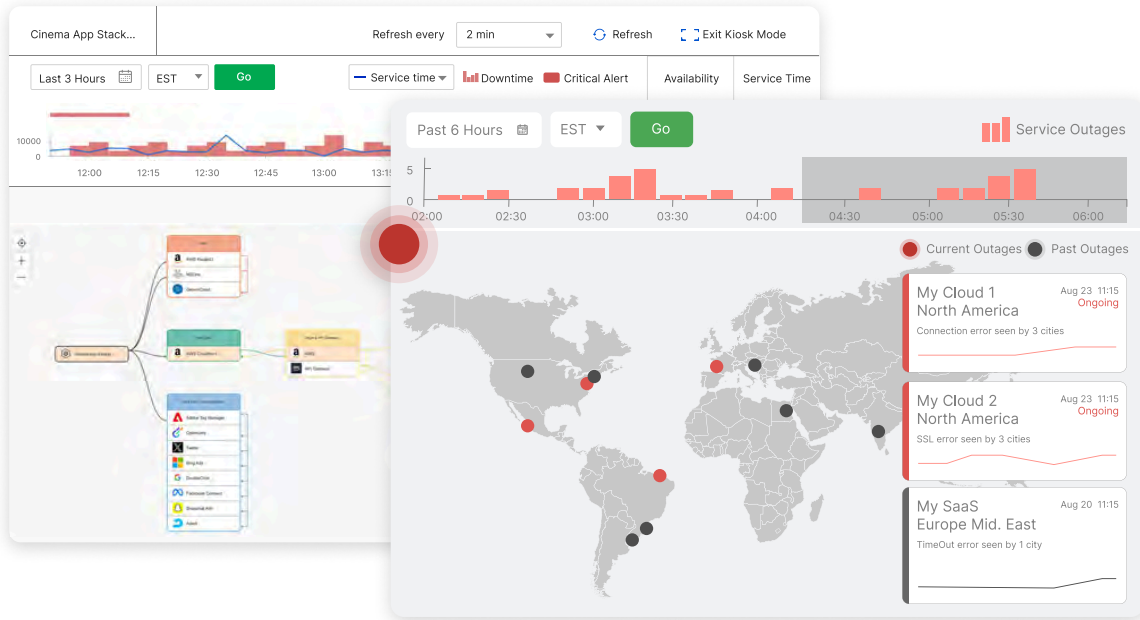
### Internet Stack Map gives you:

- A live view of your [Internet Stack](#) from the perspective of your applications
- Instant awareness of critical service or application issues
- An interactive view of all internal and external services and how they interrelate, making troubleshooting fast and easy
- Current & historical information on performance issues over time
- A real-time status dashboard for at-a-glance application health visibility
- Stack Maps for as many applications or services as you have
- Improved Internet resilience, revenue & reputation protection

### Protect critical application uptime, your revenue and reputation

- Reduce MTTI/MTTR and save time and money by instantly diagnosing issues when minutes can cost thousands of dollars
- See the Internet Stack from the perspective of your applications rather than trying to connect disparate performance alerts to specific applications or services
- Diagnose immediately by drilling down into the relevant data by clicking on the live, interactive display
- Show application status to anyone with a simple, real-time dashboard that anyone can understand at a glance

Internet Stack Map leverages data from Catchpoint's Internet Sonar to automatically generate live maps of your digital services and their health. Internet Sonar tracks the millions of daily tests run on Catchpoint's unparalleled global agent network to monitor global outages. Our AI-powered correlation engine processes the billions of resulting data points, eliminates false-positives and provides the clear outage information Internet Stack Map displays for each application. Together, they instantly answer the questions "What is wrong with my application?" and "Is it me or something else?" The result is comprehensive visibility into real-time status that only Catchpoint can provide.



### Trusted by the World's Top Brands



**of the top 10**  
Forbes Digital  
Companies



**of the top 6**  
Cloud Providers



**of the top 10**  
CDN Providers



**of the top 10**  
Publicly-traded  
Software Companies  
by Revenue

Catchpoint is the Internet Resilience Company™. The top online retailers, Global2000, CDNs, cloud service providers, and xSPs in the world rely on Catchpoint to increase their resilience by catching any issues in the Internet Stack before they impact their business. Catchpoint's Internet Performance Monitoring (IPM) suite offers web synthetics, internet synthetics, RUM, performance optimization, high fidelity data and flexible visualizations with advanced analytics. It leverages thousands of global agents (including inside wireless networks, BGP, backbone, last mile, endpoint, enterprise, ISPs and more) to provide unparalleled observability into anything that impacts your customers, workforce, networks, website performance, applications, and APIs.

Learn more at [catchpoint.com](https://catchpoint.com)



**catchpoint**