

## SOLUTION BRIEF



To learn more about Catchpoint IPM, please visit [www.catchpoint.com](http://www.catchpoint.com)

# Application Experience

Get a complete and comprehensive view of your application & API performance



The complexity of today's IT infrastructure, which includes cloud, auto-scaling, containers, and serverless, means your business can't rely solely on traditional APM. Catchpoint's Internet Performance Monitoring (IPM) provides a critical outside-in perspective that goes beyond traditional APM and NPM, giving you the insights you need to detect and troubleshoot application performance issues before they impact your business.

With full DevOps lifecycle support, and cloud application and API monitoring, you'll ensure the resilience of your applications across all channels of the digital customer and workforce experience.



Cloud Application Monitoring



API Monitoring



Full DevOps Lifecycle Support

# Trustworthy application and API performance



## Cloud Application Monitoring

Monitor your cloud applications from the same distributed locations as your users

### Cloud-clear application performance visibility

Key benefits:

- Benefit from the world's largest global agent network, with thousands of vantage points on cloud and non-cloud ISPs.
- Compare and evaluate on-premises, public, hybrid, or multi-cloud environments – including third-party components, to find the perfect fit for your needs.
- During cloud migration, rapidly identify when issues arise, ascertain root causes, effectively triage, and improve incident response times.
- Avoid relying on data from the environment being monitored – benefit from objective cloud performance data from all essential geographies to understand if your cloud investment is continuously reliable and performant.



## Full DevOps Lifecycle Support

Actionable insights through all stages of the DevOps lifecycle

### Observe everything – from pre-production to release and continual optimization

Key benefits:

- Catch issues earlier when they are cheaper to fix with customizable enterprise nodes.
- Achieve greater alignment between engineering, ITOps and the business, resulting in workforce and business growth.
- With increased automation, you'll reduce toil and have more time to work on value-based activities.
- Enable a culture of experimentation and ongoing learning to innovate and improve products, services, and processes.



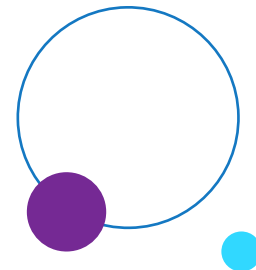
## API Monitoring

Complete visibility into business-critical APIs

### Continuously optimize API performance and uptime with API health monitoring

Key benefits:

- Capture availability, performance, and custom KPI metrics for long-term regression analysis.
- Run API transactions to test functionality, execute payloads, and parse for expected responses.
- Assure service delivery across your complex mesh of API endpoints, invoked microservices, and gateways.
- Correlate performance to business results by measuring compliance with API service-level objectives.



In today's exacting digital age, performance is paramount. The top online retailers, Global2000, CDNs, cloud service providers, and xSPs all rely on Catchpoint to ensure high performance and digital resilience by catching issues across the Internet Stack before they impact their customers, workforce or digital experiences. Catchpoint's Internet Performance Monitoring (IPM) suite offers Internet Synthetics, RUM, BGP, Tracing, performance optimization, high fidelity data and flexible visualizations with advanced analytics derived from the world's largest, most detailed, active agent network. Today's digital world requires resilience and exceptional performance, which is why The Internet Relies on Catchpoint.